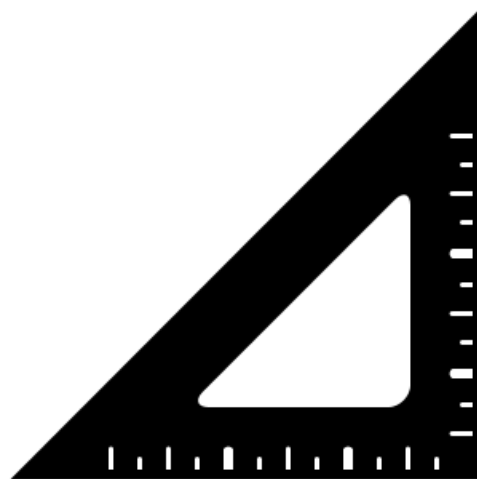




Building Construction



What is it?

The NetComTracer Building Construction module is a web-based Enterprise Building/Asset Management tool that provides an entire array of advanced functionality that fully covers the needs for managing construction operations and facilities assets. This module targets to companies that have extensive constructive activities.

Solution Technical Overview

The NetComTracer information system combines the following characteristics:

- Functionality
- Performance
- Reliability
- Manageable security
- Extensibility
- Expanded integration possibilities

Project Management & Construction Workflows

The NetComTracer Building Construction system is able to manage -in a flexible way- projects, assignments, quotations and RFQs, Material Lists, Constructors' data (informative, SLAs etc.), involved internal and external parties (responsibilities) etc. Communication through a modern and efficient B2B way of the Organization resources and the external collaborators (Constructors, designers, etc.) could be implemented.

General Management Functions include:

- Compare – budgeted, estimated and actual costs over the life of a project
- Track all costs – internal work, contract work and purchases against a project
- User friendly display of all tasks and milestones
- Project work tasks – easily choose pre-planned activities (task template) to convert into project work tasks.
- Authorization levels – only persons with proper authorization level can approve projects
- Create / manipulate quotes to vendors for materials and parts
- Manage invoicing and Request for Payments

Completely Browser-based

The application forms are lightweight to enable the accessibility over GPRS and thin clients. Devices like PDAs or mobile phones could be supported.

The system supports Application Security, Windows NT authentication as well as the forthcoming SSO (Single Sign On) platform. For covering of the reporting needs, SQL Server Reporting Services is used. The reports have the ability to be exported at least at the formats of Excel (XLS), Adobe Acrobat (PDF), Extended Markup Language (XML) and standard HTML.

Functional Overview

Workflows and procedures that are covered are:

- Shops & PoPs (Points of Presence) construction project.
- Building Expansions projects.
- Generic Construction Workflow, including installation of electromechanical equipment, Fiber Optic installation, massive renovation activities etc.
- Budget management functionality applies to all the above workflows.

User Management & Audit Trail

Multiple users can use the system. Each user's authorization is based on CRUD (Create – Retrieve – Update Delete or none) diagram for each GUI screen implementation. Information that can be stored in this sub-system will be: Action, date time and user name.

Report will be dedicated to each audit trail actor for his own functions.

NetComTracer Building Construction System Benefits

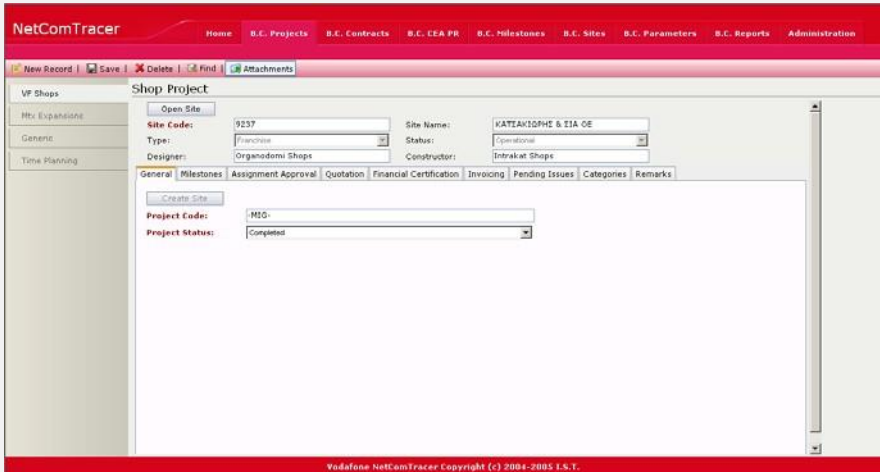
- Take Control of the construction infrastructure and repository
- Increase Productivity through accurate monitoring of construction related tasks
- Increase Construction projects' Reliability
- Reduce Operational Costs through more efficient value-chain processes.
- Reduce Administrative Costs through automation of manual processes
- More reliable and faster decision support
- "Do-More-With-Less"

IST – International Software Techniques S.A.

Aggelou Pyrri 5
115 27 Athens, Greece

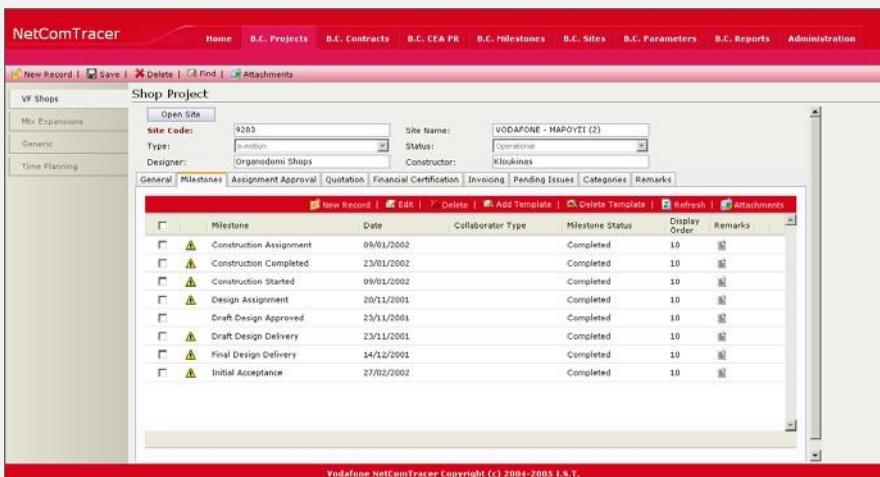
Tel. +30 210 74 88 678
Fax. +30 210 74 83 116
e-mail: info@ist.com.gr

www.ist.com.gr



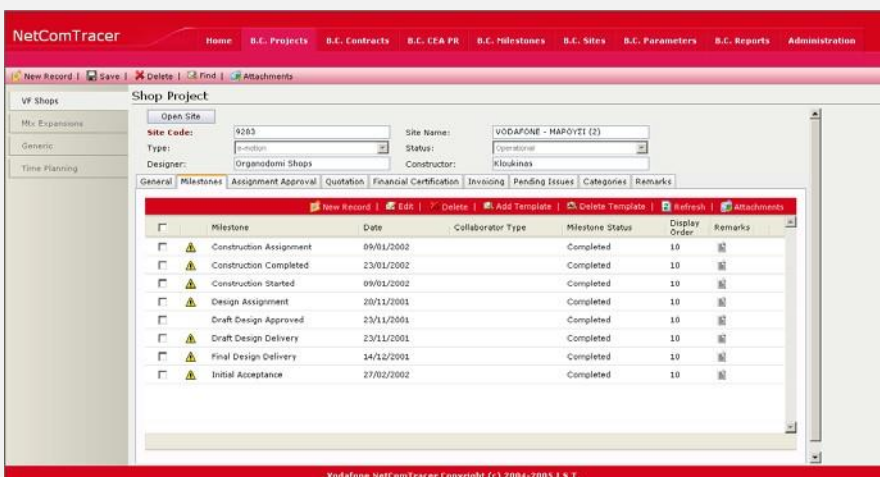
Shops & PoPs (Points of Presence) construction project

NetComTracer Building Construction helps you manage your project process. Now you can monitor the construction of new Buildings in terms of Milestones achievement, Quotations, Financial Certifications, Invoicing, Pending Issues, etc.



Flexible Milestone Management

User is able to add new milestone, modify or delete an existing, or use the template functionality in order to perform batch application. User's actions are directed by Interface according to implemented constraints e.g. User adds new milestones, selecting from a predefined list.



Efficient Quotation Management

System is able to handle separately the design and the supervision costs, breakdown each one to detailed items. Items are classified as contractual (if they are included in the relevant contract) and new items.

NetComTracer

Home B.C. Projects B.C. Contracts B.C. CEA PR B.C. Milestones B.C. Sites B.C. Parameters B.C. Reports Administration

New Record | Save | Delete | Find | Attachments

Shop Contract

General Appendix Material List Extra Charges Remarks

Contract: Shop Construction Appendix: Main Contract Increase Prices

Code	Description	Measure	Unit Price	Display Order
01.01.01	Χωματισμοί	Meters	18,50	10
01.01.02	Επισκευές	Meters	5,25	20
01.01.03	Βότρυο	Meters	10	25
01.02.01	Καλοήθια Α	Meters	6,30	30

New Item

Code:

Description:

Measure:

Unit Price:

Display Order:

Yodafone NetComTracer Copyright (C) 2004-2005 I.S.T.

Contract Management

System uses contracts' information as lookup and supports a unified interface, including management of material lists, additional costs and travel expenses, depending on the contract's type.